

# PLUMBING SYSTEMS COMMERCIAL ES IRONHEART



## FOR WHERE IT REALLY MATTERS

Norcross based SyncroFlo has over 50 years of experience manufacturing packaged pumping systems. We were the first to prepackage pumping systems for boosting pressure in domestic water distribution systems. The “IronHeart,” which has been the core of our business since 1985, has been the industry standard for pressure boosting domestic water in commercial buildings. We offer 78 standard models, configured with either closed coupled end suction or vertical multistage pumps, as well as duplex and triplex models with flows rated to 600 GPM and boost pressures to 190 PSI.

## WHY A SYNCROFLO PRE PACKAGED SYSTEM?

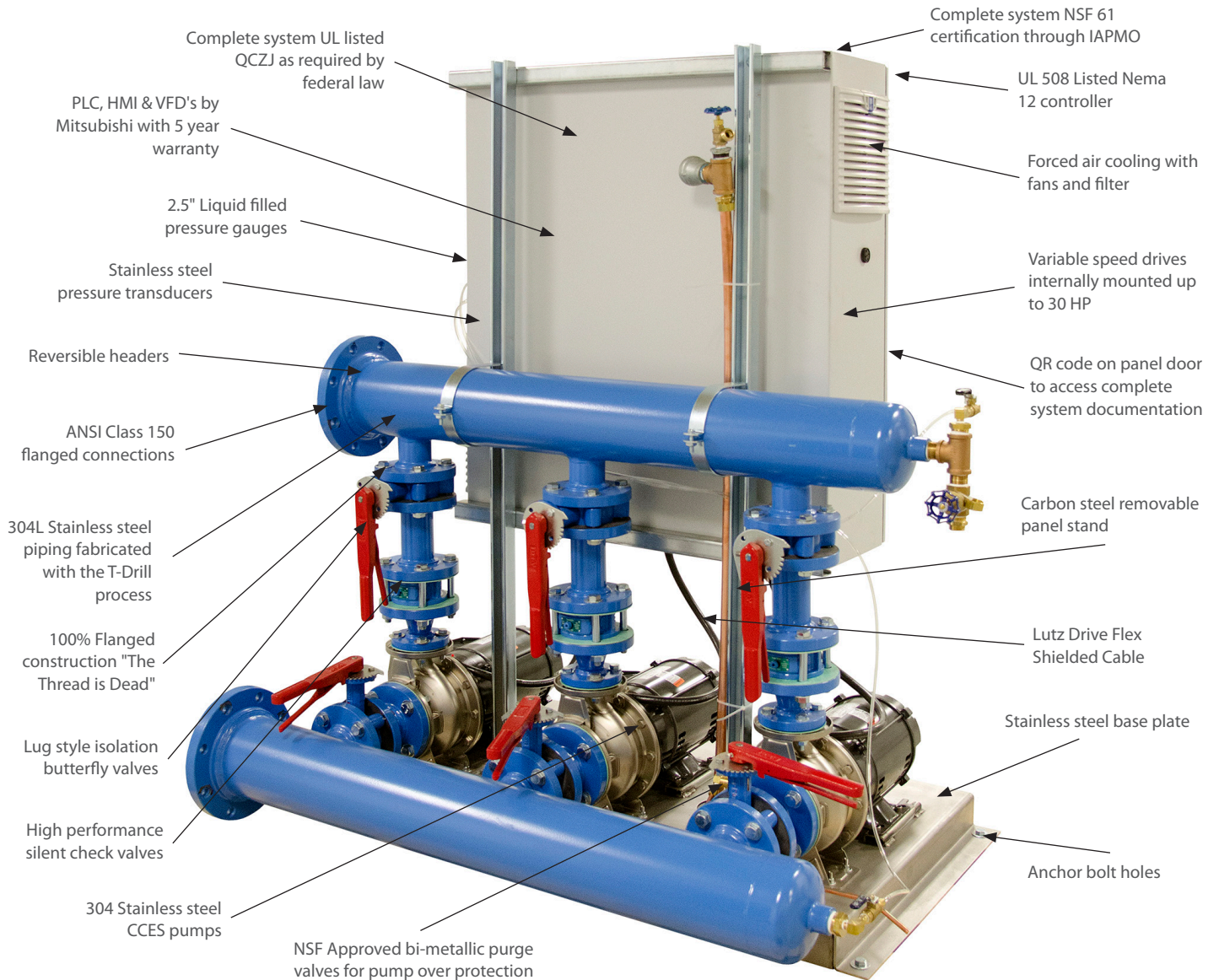
All SyncroFlo IronHeart systems are manufactured to the highest standards. The 155,000 square foot facility is ISO 9001-2008 certified. All systems bear the UL label, are NSF-61 certified by IAPMO and have the low led certification for potable water. Control panels are assembled in a UL 508 panel shop with QR (Quick Reference) code identification for web based access to the project documents. All systems are factory tested in a NIST traceable test stand and the results are recorded for generation of an XY plot.

## QUALITY CONTROL AND TESTING!

SyncroFlo’s quality control program is on the leading edge of technology for our industry. Each system is tracked at all stages of manufacturing, assembly and testing with web based reporting via hand held devices. All welding is performed by AWS or ASME certified welders. Once manufacturing and assembly are complete, the system is connected to our NIST certified test stand. We then hydrostatically test and flow test from zero to 100% of design and under specified suction and net delivery pressures. Once on site, your only surprise is how easy the system is to startup and commission.



## PLUMBING - COMMERCIAL ES IRONHEART



### PUMP TYPES

Close Coupled End Suction & Vertical Multistage

### PERFORMANCE

- 3" & 4" Discharges
- Flow Rates to 750 GPM
- Heads to 430'

### FEATURES

- UL LISTING "QCZJ"
- NSF 61 certified by IAPMO
- 100% flanged construction "THE THREAD IS DEAD!"
- 304 Stainless steel pumps close coupled end suction or vertical multistage
- Stainless steel system base with grout holes, anchor holes and pipe supports
- Lug style isolation butterfly valves

- High performance check valves for low station losses
- PLC and HMI based controls with 5 year warranty standard
- Nema 12 enclosure with air filter and fan for heat dissipation
- Bolt on panel stand
- QR code system identification for web based access to system manuals