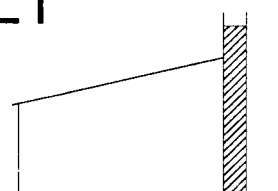
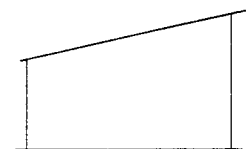
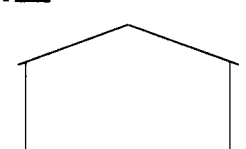


STANDARD BUILDING TYPES

TYPE	BUILDING WIDTH												STANDARD DESIGN LOADS				
	5'-4"	6'-8"	8'-0"	9'-4"	10'-8"	12'-0"	13'-4"	14'-8"	16'-0"	20'-0"	24'-0"	28'-0"	32'-0"		PSF LIVE	MPH WIND	
LT*  LEAN-TO																	
S  SINGLE SLOPE													LT2*	S2	AL2	20	70
	LT2C*	S2C	AL2C	20	100												
AL  GABLE													LT3*	S3	AL3	30	90
	LT4*	S4	AL4	40	90												
LOADING CONDITIONS OTHER THAN SHOWN SHOULD BE REFERRED TO PARKLINE																	

STANDARD HEIGHTS	8',10',12',14',16' **
-------------------------	-----------------------

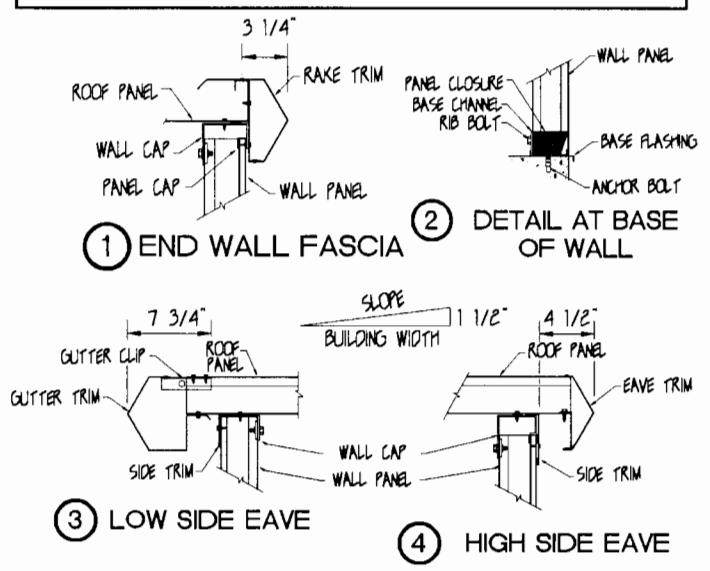
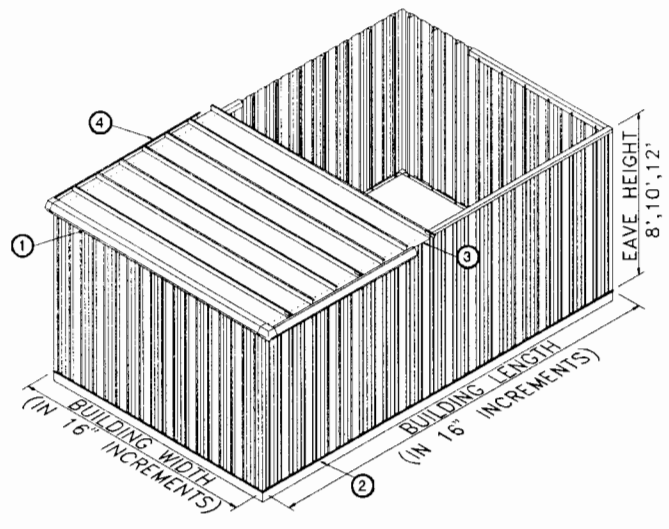
STANDARD LENGTHS	TYPE S AND LT BUILDING LENGTHS = 16' MULTIPLES TYPE AL BUILDING LENGTHS = 4'-0" MULTIPLES
-------------------------	--

LT - STRUCTURAL SUPPORT AND ATTACHMENT OF ROOF AT EXISTING BUILDING SHALL BE RESPONSIBILITY OF OTHERS.

* LT BUILDINGS MUST BE CHECKED FOR SNOW DRIFTING.

** LIMITED AVAILABILITY

SINGLE SLOPE BUILDING



PRODUCT NAME

Type S (Trimline)

MANUFACTURER

Parkline, Inc.
 P.O. Box 65
 Winfield, West Virginia 25213
 Phone: (304) 586-2113 in WV
 (800) 786-4855 outside WV
 (304) 586-3842 FAX
 web: <http://www.parkline.com>
 E-mail: parkline@parkline.com

PRODUCT DESCRIPTION

TYPE S (Trimline)

Roof Design

Each "Type S" building shall have a single sloped (shed) roof with a pitch of 1 1/2" over the building width. The 16" wide interlocking roof panels shall vary from a nominal 24 to 18 gauge depending upon the loading conditions. They shall be attached to the wall cap through factory punched holes with #14 corrosion resistant fasteners.

The roof system shall include a gutter and a 2" x 3" downspout system at low sidewall, matching eave trim high side, and matching rake trim at the building endwalls. All gutters and trim shall be nominal 26 gauge galvanized steel prepainted Arctic White or Roman Bronze.

Wall Design

The roof system is supported by a fluted, nominal 24 gauge, embossed, factory painted, 16" wide x 3" deep interlocking wall panel. The panels are fastened at the top and bottom to galvanized structural channels and wall caps with 3/8" diameter electro-galvanized machine bolts, thru factory punched holes.

Structural Framing

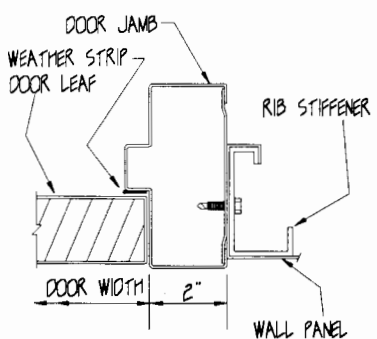
Transmission of horizontal wind loads across the building shall be made through the roof panel system and no separate roof or wall diagonal bracing shall be required.

Where required for proper transmission of lateral wind loads, structural frame wind bents shall be installed. Wind bents shall consist of a prime painted column and rafter bolted assembly of steel conforming to ASTM A 36 specifications.

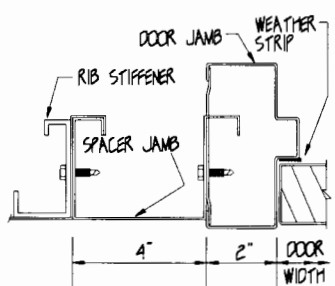


13122 Shed

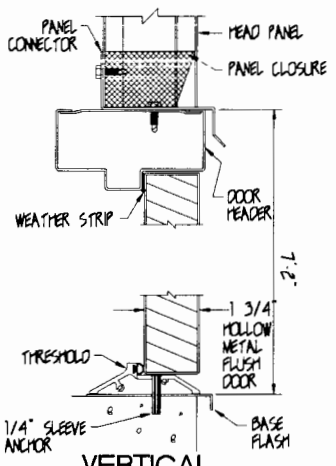
HOLLOW METAL DOORS



JAMB SECTION
2470 AND 3070



JAMB SECTION
W/ 4" SPACER JAMB
BOTH SIDES 3070
LEFT SIDE 6070



VERTICAL SECTION

PRODUCT NAME

Hollow Metal Doors

MANUFACTURER

Parkline, Inc.
P.O. Box 65
Winfield, West Virginia 25213
Phone: (304) 586-2113 in WV
(800) 786-4855 outside WV
(304) 586-3842 FAX

web: <http://www.parkline.com>
E-mail: parkline@parkline.com

PRODUCT DESCRIPTION

DOOR LEAF

Door leaves shall be 1 3/4" thick flush construction of a nominal 20 gauge galvanized steel, reinforced by lamination to a small cell honeycomb core. Leaves shall be manufactured in accordance with ANSI/SDI-100, Grade I, Model 1 (STC rating 30 and U value .41).

DOOR FRAME

Door frames shall be 4 3/4" deep, double rabbeted type, of nominal 16 gauge galvanized steel. Frames shall have hinge reinforcement of a nominal 7 gauge and lock reinforcement of a nominal 16 gauge.

DOOR FINISH

All leaves and frames shall be factory painted with one coat of baked on primer.

- Optional:
- a) Permanent or removable transoms.
 - b) Insulated foamed-in-place, rigid, closed cell polyurethane core chemically bonded to 20 gauge galvanized steel face sheets. Insulated leaves have STC rating 22 and U value .07.
 - c) Factory painted.
 - d) 18 gauge galvanized steel leaves.

DOOR ASSEMBLY

All doors shall be provided "assembled" in their frames with all hardware, except door levers or knobs, installed on door leaf. 6'0" x 7'0" double swing doors require some field assembly.



13122 HMD 1

HOLLOW METAL DOORS

PRODUCT DESCRIPTION

DOOR LEAVES - Shall be of types indicated below.

- a. Solid Panel (Type S)
- b. Narrow lite, top with 5" x 30", 1/4" acrylic glazing (standard), solid bottom. (Type NL)
- c. Half glass, top open for glazing, solid bottom. (Type HG) Nominal Glass Sizes:

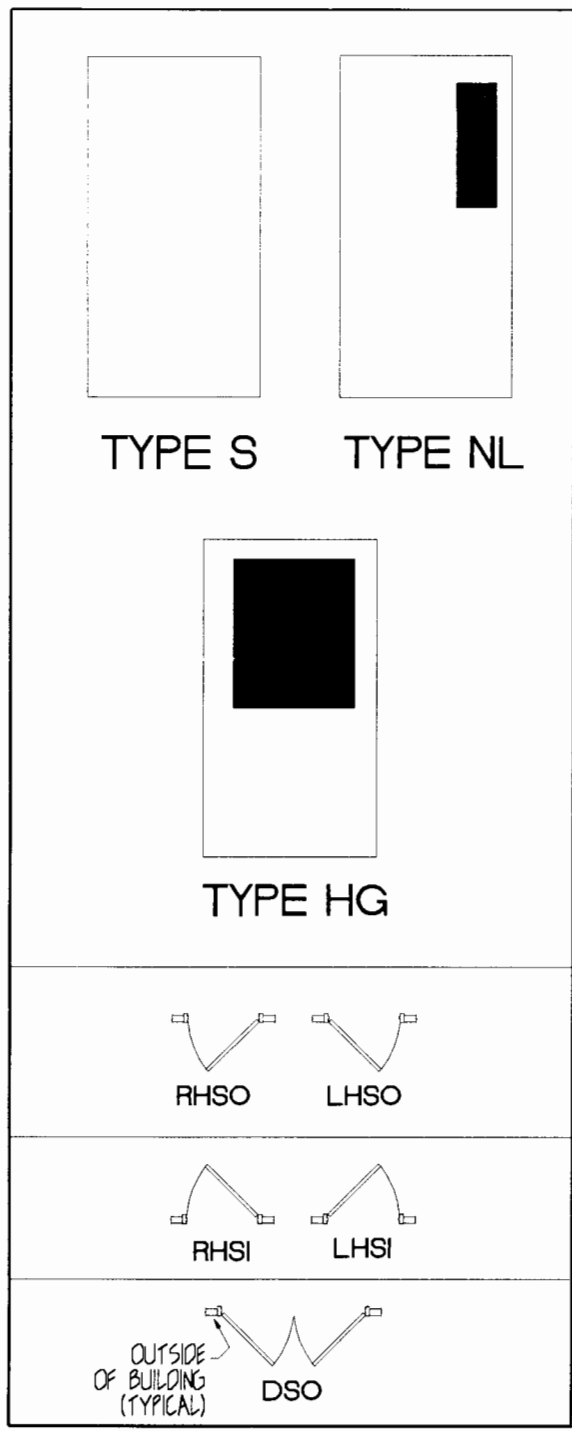
- 2470 - 12" x 30"
- 3070 - 20" x 30"
- 3870 - 28" x 30"

Glazing options:

- 1/4" Acrylic
- 1/4" Polycarbonate
- 1/4" Polished Wire

STANDARD DOOR HARDWARE:

- a. (3) 4-1/2" steel hinges per ANSI #A5133 630 Satin Stainless Steel Finish with non-rising pins.
- b. 3 11/16" wide 5/8" high extruded aluminum threshold. (out swing)
- c. 1/4" x 1/2" silicone rubber weatherstripping.
- d. Mortise lockset per ANSI A156.13, Series 100, Grade 1, Function F13, 626 Satin Chrome Finish. (levers both sides)



PRODUCT NAME

Hollow Metal Doors

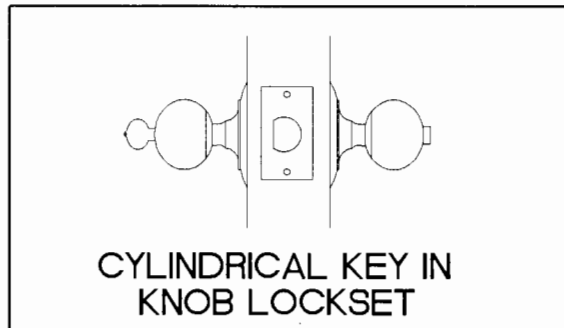
MANUFACTURER

Parkline, Inc.
 P.O. Box 65
 Winfield, West Virginia 25213
 Phone: (304) 586-2113 in WV
 (800) 786-4855 outside WV
 (304) 586-3842 FAX
 web: <http://www.parkline.com>
 E-mail: parkline@parkline.com

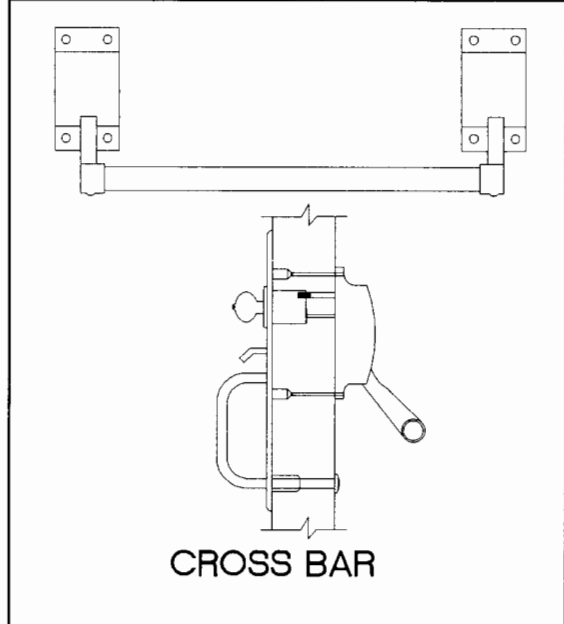


13122 HMD 2

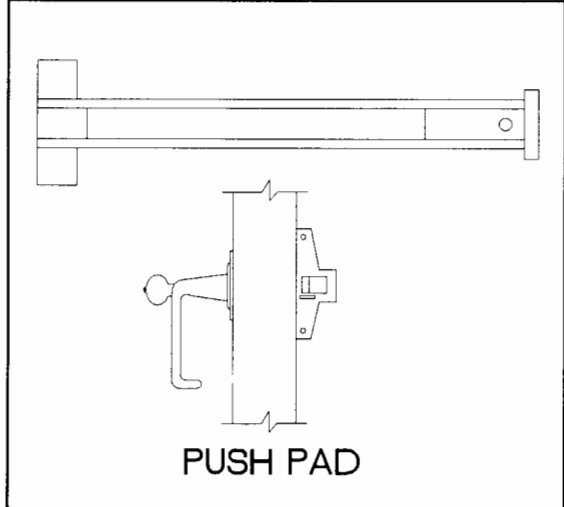
HOLLOW METAL DOORS
(Optional Hardware)



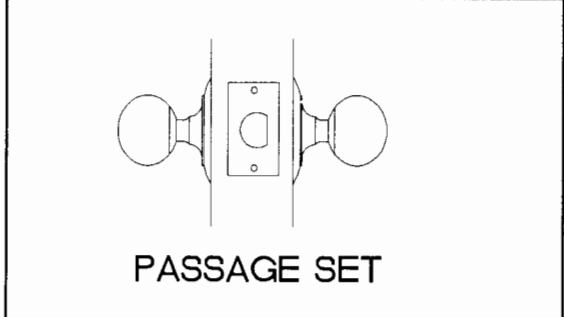
CYLINDRICAL KEY IN KNOB LOCKSET



CROSS BAR



PUSH PAD



PASSAGE SET

PRODUCT NAME

Hollow Metal Doors

MANUFACTURER

Parkline, Inc.
P.O. Box 65
Winfield, West Virginia 25213
Phone: (304) 586-2113 in WV
(800) 786-4855 outside WV
(304) 586-3842 FAX
web: <http://www.parkline.com>
E-mail: parkline@parkline.com

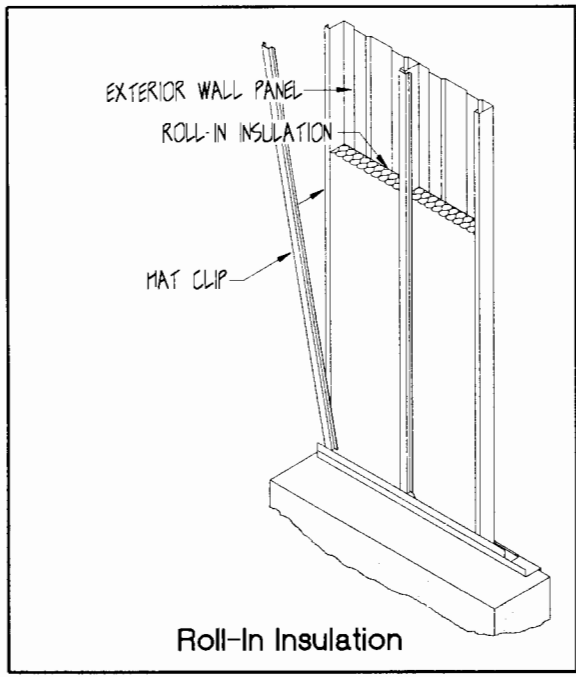
PRODUCT DESCRIPTION

OPTIONAL DOOR HARDWARE:

- a. Cylindrical key in knob lockset per ANSI A156.2, Series 4000, Grade 2, Function F81, 630 Satin Stainless Steel Finish.
- b. Rim type "Cross Bar" panic device per ANSI A156.3, Type 1, Grade 1, Function 05, with 627 Satin Aluminum Finish.
- c. Rim type "Push Pad" panic device built to ANSI A156.3, Type 1, Grade 1, Function 08, Aluminum Lacquer Finish 626 Exterior
- d. Passage set per ANSI A156.2, Series 4000, Grade 2, Function F75, 626 Satin Chrome Finish.
- e. Door closer is certified to conform to ANSI 156.4 Grade 1 and meets exterior barrier free codes in Aluminum Lacquer Finish 689.
- f. 23" wide x 20" high adjustable blade louver with mesh insect screen.
- g. ADA (The Americans With Disabilities Act) Package.



13122 HMD 3



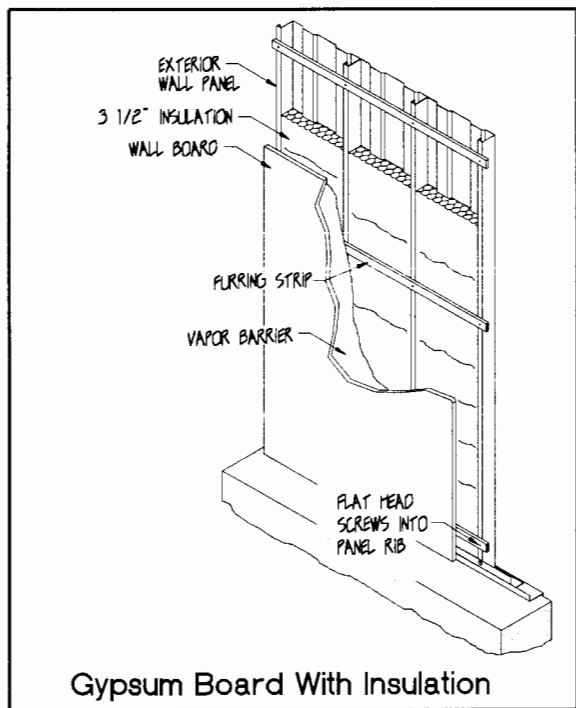
WALL INSULATION

PRODUCT DESCRIPTION

ROLL-IN INSULATION

The interior of the building shall be insulated with 3" thick fiberglass faced on its exposed side with a white metalized polypropylene scrimkraft facing. The insulation shall be retained between the interlocking panel ribs with a white PVC hat clip attached with self drilling fasteners over the panel ribs.

SYSTEM VALUES	U	R
3" THICK	C	.19



GYPNUM BOARD WITH INSULATION

The wall system shall include 3 1/2" thick R-11 unfaced fiberglass batt insulation, vapor barrier (optional), furring strips and 1/2" thick gypsum board.

Many different interior finishes can be easily applied to the Parkline wall system to achieve the desired thermal or fire ratings.

SYSTEM VALUES	U	R
3" INSULATION	C	.16

PRODUCT NAME

Wall Insulation

MANUFACTURER

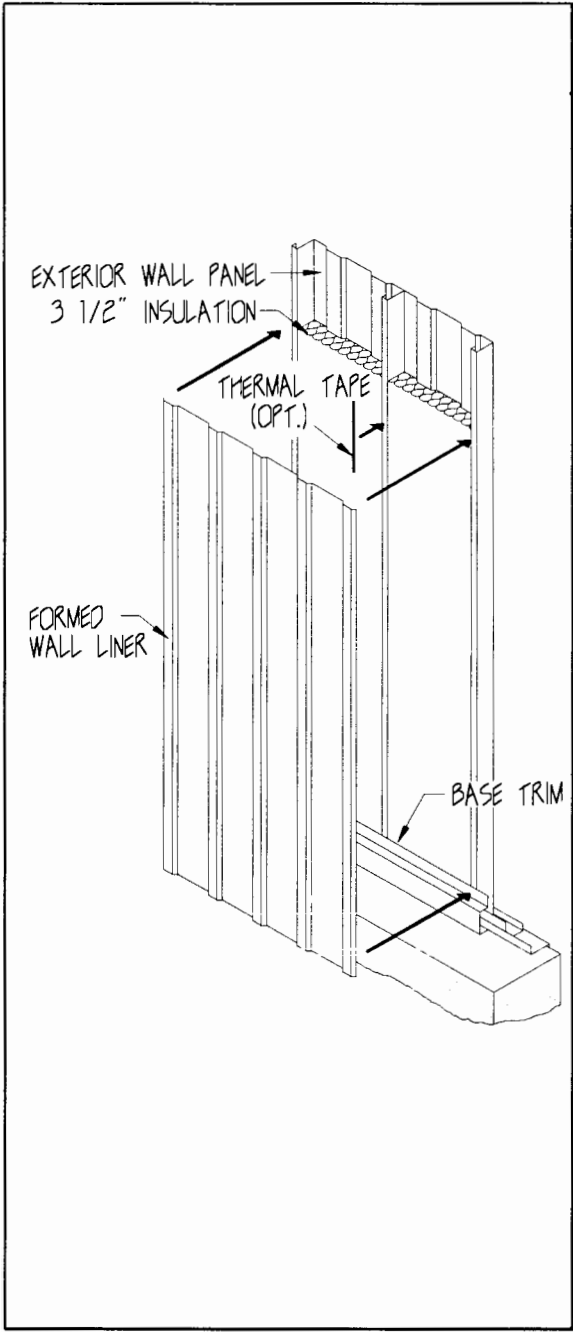
Parkline, Inc.
P.O. Box 65
Winfield, West Virginia 25213
Phone: (304) 586-2113 in WV
(800) 786-4855 outside WV
(304) 586-3842 FAX
web: <http://www.parkline.com>
E-mail: parkline@parkline.com

Note: C = Calculated



13122 W I

FORMED WALL LINER



PRODUCT DESCRIPTION

FORMED WALL LINER

Interior liner panels shall have a maximum coverage width of 32" and overlap with the adjoining liner panel. The interior surface shall have 1/4" high x 1" wide ribs on 8" centers. The liner shall be continuous length from base to eave except where interrupted by wall accessories. The exterior panel void shall have 3 1/2" thick unfaced R-11 fiberglass insulation.

Panels shall be rollformed of nominal 26 gauge galvanized steel, prepainted Arctic White.

The liner panel is attached to the exterior panel ribs on 24" centers with a #12 self drilling fastener that is painted to match the liner.

A matching nominal 26 gauge base trim is furnished as a standard. Ceiling trim is only furnished when a Parkline metal ceiling is being utilized.

Optional: A one inch wide thermal tape can be applied to the exterior panel ribs to abate thermal bridging between the joints.

Optional: (Acoustical Wall System A29.) A29 Acoustical Wall System shall be accomplished by the system described above including thermal tape, except the liner panel shall have 1/8" diameter perforations spaced on 3/8" staggered centers. The system shall have a NRC rating of 0.90 and STC rating of 29.

PRODUCT NAME

Formed Wall Liner

MANUFACTURER

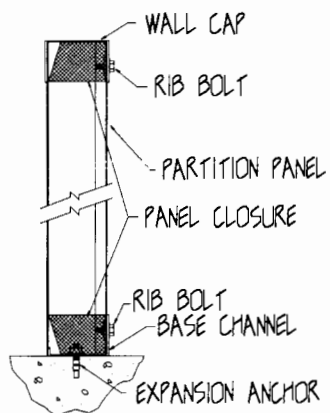
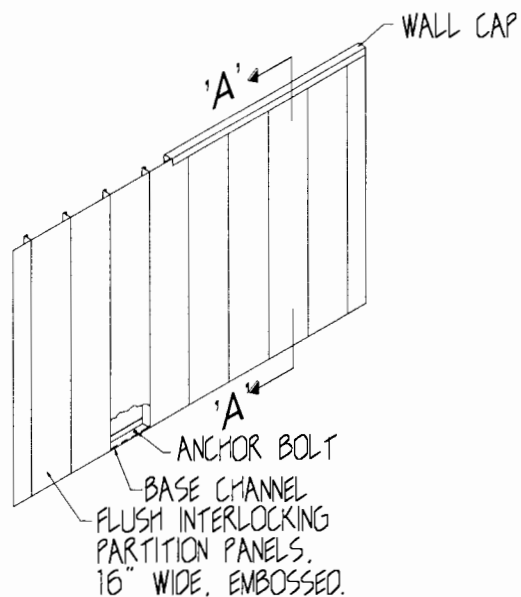
Parkline, Inc.
P.O. Box 65
Winfield, West Virginia 25213
Phone: (304) 586-2113 in WV
(800) 786-4855 outside WV
(304) 586-3842 FAX
web: <http://www.parkline.com>
E-mail: parkline@parkline.com

SYSTEM VALUES		U	R
3" THICK	C	0.16	6.1
	T	0.19	5.1

Note : C = Calculated
T = Tested



13122 FWL



SECTION - 'A'

PARTITION

PRODUCT DESCRIPTION

PARTITION

Partitions shall be constructed of 3' x 16' interlocking flush type smooth or embossed surfaced panels in a nominal 24 gauge galvanized steel, factory painted Arctic White. Partitions will be furnished complete with base channel, wall cap and all required fasteners.

Partitions will accept all wall accessories such as walk doors, framed openings, louvers, wall opening kits, and windows. In addition to wall accessories, partitions can be supplied with all interior liners and insulation for a complete field assembled system.

Optional: Partitions can be supplied embossed in nominal 20 gauge and unembossed in nominal 18 gauge, galvanized steel, factory painted Arctic White.

PRODUCT NAME

Partition

MANUFACTURER

Parkline, Inc.

P.O. Box 65

Winfield, West Virginia 25213

Phone: (304) 586-2113 in WV

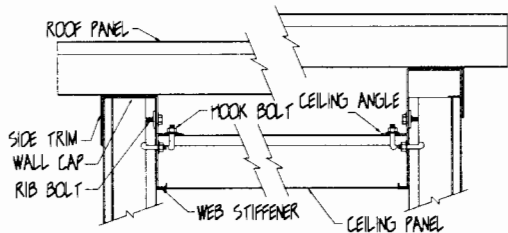
(800) 786-4855 outside WV

(304) 586-3842 FAX

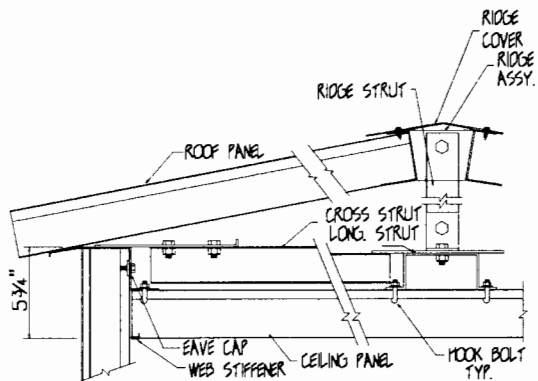
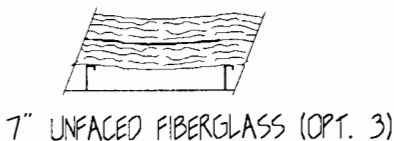
web: <http://www.parkline.com>E-mail: parkline@parkline.com
 PARKLINE, INC.

13122 PART

CEILING



'S' TYPE BLDG.



'AL' TYPE BLDG.

PRODUCT DESCRIPTION

CEILING

The metal ceiling system shall consist of 3" deep, 16" wide interlocking panels of nominal 24 gauge embossed galvanized steel, factory painted Arctic White. The ceiling system shall be supported at its perimeter by concealed angles and hook bolts. The ceiling system shall be furnished complete with all necessary connectors and fasteners.

Optional: Metal ceiling insulated with 16" wide by 3 1/2" thick R-11 unfaced fiberglass insulation laid at right angles to the panel ribs.

Optional: 16" wide x 3 1/2" thick unfaced fiberglass insulation laid in direction of panel ribs with an additional 16" wide x 3 1/2" thick layer placed perpendicular to the bottom layer.

Optional: Acoustical perforations across 14" of panel width. Perforations shall be 1/8" diameter on a patterned spacing of 3/8". The ceiling system shall have been certified by an independent testing laboratory for a minimum NRC rating of 0.95 when tested in accordance with ASTM C 423-66 standards. STC-29

PRODUCT NAME

Ceiling

MANUFACTURER

Parkline, Inc.
P.O. Box 65
Winfield, West Virginia 25213
Phone: (304) 586-2113 in WV
(800) 786-4855 outside WV
(304) 586-3842 FAX

web: <http://www.parkline.com>
E-mail: parkline@parkline.com

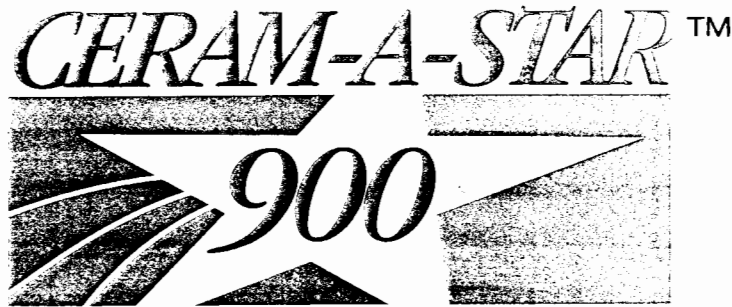
SYSTEM VALUES		U	R
3 1/2' FRICTION FIT (OPT. 1)	C	.09	11.3
7' FRICTION FIT (OPT. 2)	C	.06	15.9
7' FRICTION FIT (OPT. 3)	C	.05	21.3 *

* Requires ceiling to be dropped 3" below that shown in drawing above left.

PARKLINE, INC.

13122 CEIL

The Qualities of



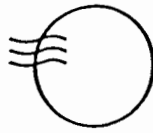
Performance Specification for CERAM-A-STAR™ 900 Silicone Polyester Finishes

General	Substrate: Hot-Dipped Galvanized steel, Galvalume Galfan and Aluminum. Application: Roll coating of two-coat system. Composition: Akzo's recommended Proprietary Solvent or Waterborne Primer and CERAM-A-STAR™ 900 topcoat, any color over properly cleaned and pre-treated substrate.
Surface Appearance	Smooth and free of streaks, blistering and other imperfections.
Film Thickness	Topside finish: Primer (dry) = 0.20 --0.25 mil; Top-coat (dry) = 0.7 - 0.9 mil. Reverse side finish: Primer (dry) 0.15 - 0.25 mil; Pigmented polyester backer (dry) = 0.35 - 0.45 mil. Total DFT for system = 0.90 - 1.15 mils. All measurements per NCCA Technical Bulletin II -4 or ASTM D 1005-84 (1990).
Topside Color	Controlled to the Master Standard by an approved Color Difference Meter or Spectrophotometer, and by visual match under daylight and horizon light of a Macbeth Daylight Booth per ASTM D 1729-89.
Specular Gloss	Determined per ASTM D 523-89 at a glossmeter angle of 60°. CERAM-A-STAR™ 900 standard gloss range is 25% – 40% but can be made available in both higher and lower gloss ranges upon special request.
Hardness	Minimum pencil hardness, using Eagle Turquoise Pencils per NCCA Technical Bulletin II-12 or ASTM D 3363-92a is "F".
Cure Test	Cured in baking oven to withstand 100 double rubs of MEK soaked cloth with only slight burnishing, per NCCA Bulletin II-18.
Cross-Hatch Adhesion	No paint removal with Scotch #610 cellophane tape after cross-scoring with eleven horizontal and eleven vertical lines 1/8" apart, per NCCA Bulletin 11-5 or ASTM D 3359-93.
Direct and Reverse Impact Adhesion	No visible paint removal with Scotch #610 cellophane tape after direct and reverse impact of 80-inch pounds, using 5/8" steel ball on a Garder Impact Tester. (Not to include Zinc coating failures.) Per NCCA Bulletin 11-6 or ASTM D 2794-93.
Bend Adhesion	Per ASTM D 4145-83 (1990), slight micro-cracking of finish and no loss of adhesion when taped with Scotch #610 cellophane tape when subjected to a 2T diameter 180° bend test on 0.017 G-90 (grade D) galvanized steel or fabricator's roll-forming operation. (Not to include Zinc failures.) Note: A forming operation using a "Butler Jig" may be substituted for this test to more closely simulate the roll forming operation. Per ASTM D 522-93, an 1/8" mandrel bend may also be used to evaluate flexibility, with the same results in flexibility and adhesion.

Humidity Resistance	No blistering, cracking, peeling, loss of gloss or softening of the finish after 1000 hours of exposure to 100% humidity at 100°F ± 5°F. Federal Test Method Standard 141, Method 6201 or ASTM D 2247-92.
Salt Spray Resistance	Samples diagonally scored and subjected to 5% neutral salt spray per ASTM B 117-90, then taped with Scotch #610 cellophane tape: 1000 Hours – No blistering, and no loss of adhesion greater than 1/8" from score line. Sample taped 1 hour after removal from test cabinet.
Water Immersion Resistance	Samples immersed in distilled water at 100°F per ASTM D 870-92: 500 hours– No loss of gloss, blistering, cracking, color change or softening of finish. 1000 Hours – No loss of gloss, color change, cracking, and no blistering greater than medium #6 over 20% of test area per ASTM D 714-87. Slight softening of finish when first removed from immersion; original hardness regained after 24 hours at room temperature.
Cleveland Condensing Cabinet	No blistering or white rust after 240 hours at 140°F, with a 15-minute dry off period every 6 hours, per ASTM D 4585-86 (1991), and NCCA Bulletin III-6.
Chemical Resistance	No significant color change after 24 hours exposure to 10% solutions of hydrochloric and sulfuric acids, per ASTM D 1308-87 (1993), Procedure 6.2 (spot test).
Kesternich Test	No significant color change after 10 cycles in an SO ₂ chamber (Kesternich Cabinet or equivalent), per ASTM G-87-84 (1990).
Weatherometer Test	No checking, blistering or adhesion loss of external coating system after 2000 hours of accelerated weathering testing, per ASTM D 822-89/G 23-93.
Chalking Resistance	No chalking greater than #8 rating per ASTM D 4214-89, method D, after a 2000 hour weatherometer test.
Color Change	Exterior coating color change not to exceed 5 NBS units per ASTM D 2244-93 test procedure, after 2000 hour weatherometer test.
Exterior Weathering	Florida exposure (45° South) and EMMAQUA testing, per ASTM D 4141-93. Procedure C, both confirm the excellent exposure characteristics of CERAM-A-STAR™ 900 systems.
Flame Spread Rating	CERAM-A-STAR™ 900 has been tested by an independent laboratory, and found to have a flame spread classification of A (Class 1), when tested in accordance with ASTM E 84-91.
Abrasion Resistance	Per ASTM D 968-93, Method A, CERAM-A-STAR™ 900 will pass 30 liters/mil, minimum, of falling sand.

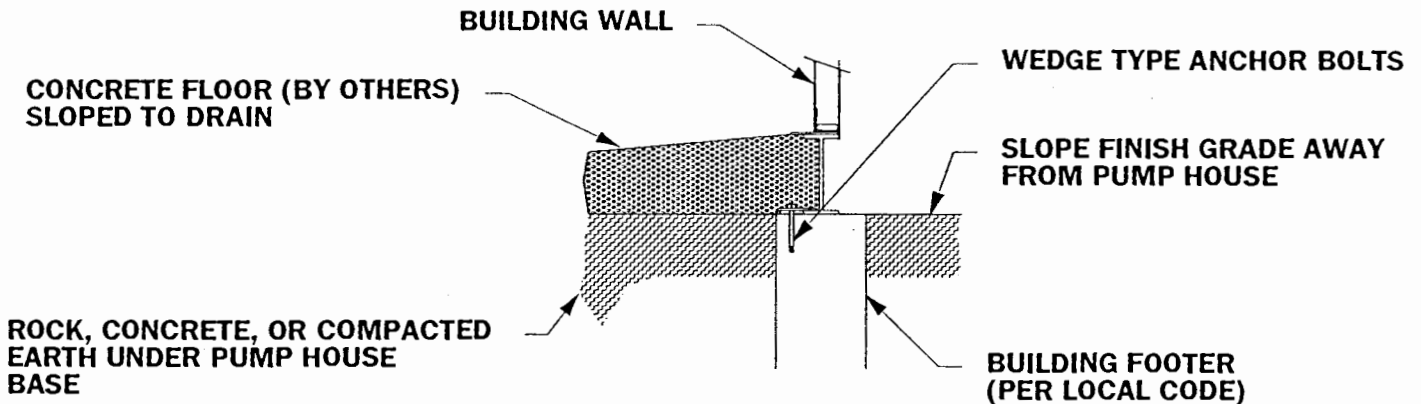


Akzo Nobel Coatings Inc.
 1313 Windsor Avenue
 P.O. Box 489
 Columbus, OH 43216-0489
 Phone (614) 294-3331
 Fax (614) 294-0436



SyncroFlo, Inc.

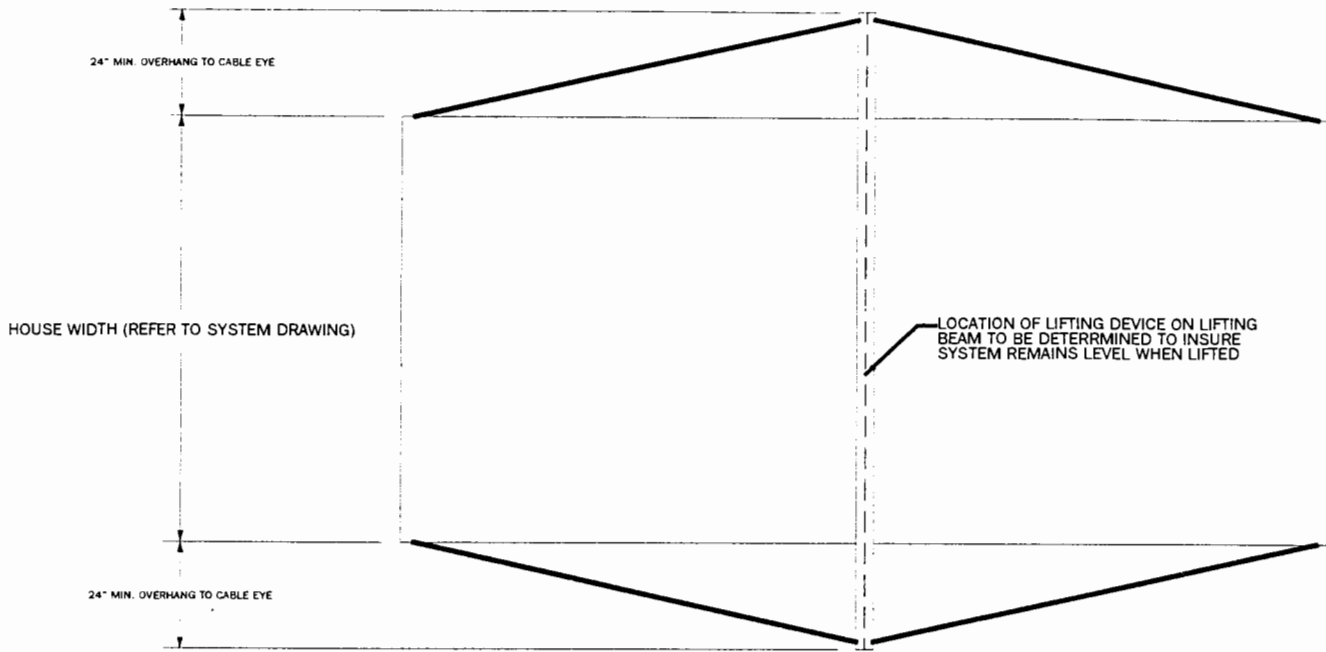
TYPICAL PUMP HOUSE FOUNDATION DETAIL W/ CONCRETE FLOOR



6700 Best Friend Rd. Norcross, Ga. 30071 • Phone (770) 447-4443 • Fax (770) 447-0230

Bulletin No.: FD01 • Effective: 08/04/97 • Supersedes: 03/13/95

HOUSE LIFTING DETAILS



NOTES:

1. THIS DRAWING IS INTENDED AS AN AID IN THE OFFLOADING OF SYNCROFLO, INC. PUMPING SYSTEMS. IT IS NOT TO BE CONSIDERED ALL INCLUSIVE OF CONDITIONS BEYOND SYNCROFLO'S CONTROL.

2. MOST SYSTEMS REQUIRE 4 CABLES FOR LIFTING. LARGER SYSTEMS MAY REQUIRE MORE AS SHOWN. NUMBER OF CABLES TO BE DETERMINED BY RIGGING CONTRACTOR.

